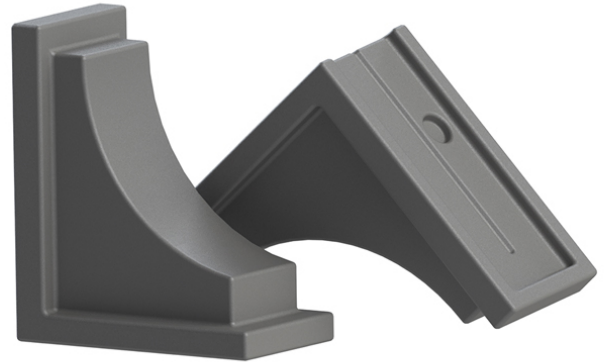




- Made from 100% high-grade polyethylene
- Designed specifically for Nantucket window boxes
- Brackets attach easily to the existing wall mount brackets
- Weather resistant, low maintenance material
- Warranty: 15-Yr Residential Use / 5-Yr Commercial Use



## PRODUCT DIMENSIONS

**Outside Dimensions:** 8in L x 3.9in W x 7in H (20.3cm x 9.9cm x 17.8cm)

**Wall Thickness:** 0.125in (3.17mm)

**Part Weight:** 1.4lbs (0.6kg)

**Material:** Polyethylene

**Contents:** 2 decorative brackets and 4 mounting screws

